

THE HOOSIER KERNEL

Publication of the
INDIANA NUT GROWERS ASSOCIATION

J.R. McKenna, Editor

Volume 58, No. 4

December, 2011

Winter Meeting Sunday

Dec 4, 2011

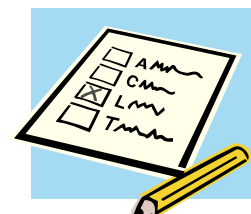
Marion Co. Purdue Extension Office
6640 Intech Blvd # 120, Indianapolis, IN

Lunch 11:30 Business Meeting & Elections 12:30 Pruning Fruit & Nut Trees 1:30
Auction 2:30-3:00

Contents

Articles	Page	Articles	Page
Winter Meeting Information.....	2	Ladies Page.....	12
On the Stump	3	2011 INGA Officers	13
Auction Items	4	Ask the Experts	14
INGA Name Change.....	5	INGA Directors	14
2011 TCD Reports & Research...6-10		Committees	14
New Liability Law	11	Great Links on the Web.....	15

Be Prepared for Elections of INGA Officers & Directors



Directions to the Marion Co., Purdue Extension Office

6640 Intech Blvd # 120,
Indianapolis, IN

From I-65 (northwest side):

Exit at W. 71st St., go east ~ 1 Mile, right into Intech Park at 1st light (at sign, also note Wendy's, bank and shops), go 1/2 way around circle and proceed to Intech #10, right then left into parking.

From I-465 (northwest side):

Exit at W. 71st St., West to 1st light then left into Intech Park



Dec 4 Speaker : How to Prune Fruit & Nut Trees

Jim McKenna will present the science & art of tree training and pruning techniques for maximizing quality fruit & nut production. Jim was a student in the Pomology Department at UC Davis where he was instructed in the fine art of pruning from University of California professors, extension specialists, and commercial growers. Bring pictures of trees you have had problems with or those that you are particularly proud of to discuss with the group. Specific topics will include:

Timing

Thinning Cuts vs. Heading cuts

Vegetative vs. reproductive growth

Size control

Suckers and water sprouts

Tree Architecture:

- Open Vase

- Central Leader

- Modified Central Leader

Disease Control & Management